

**POLY FLEX DATA SHEET**

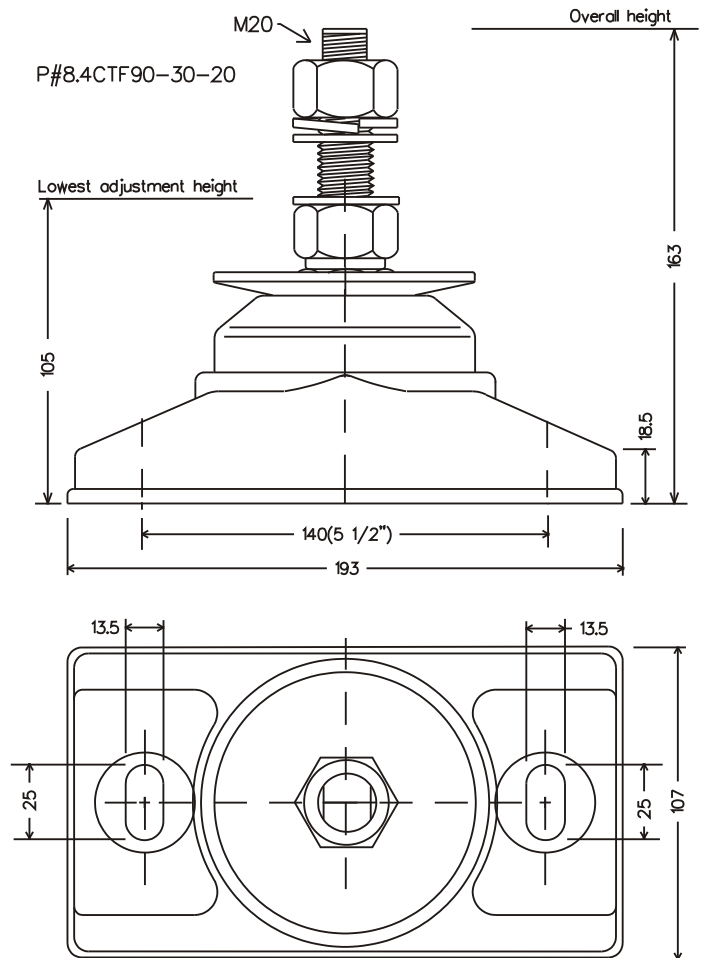
PRODUCT: MOUNT **P-SYSTEM**®

MODEL: **P#8.4CTF90-30-20**

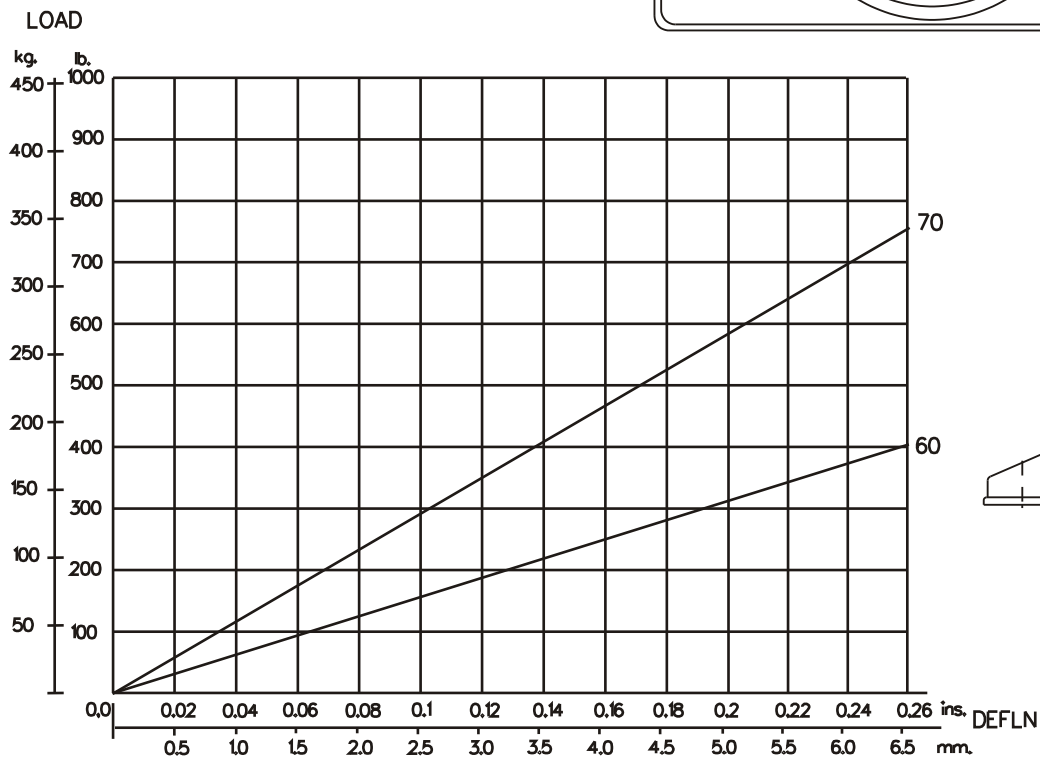
IDENTIFICATION SYSTEM				
P# <b>8</b> F <b>90</b> - <b>30</b> - <b>20</b> ( <b>80</b> )				
BASE TYPE	CORE DIA.	CORE HEIGHT	THREAD SIZE	CORE HARDNESS

CORE COLOUR	SHORE HARDNESS
ORANGE	50
BLUE	60
YELLOW	70
LIGHT GREEN	80

MATERIAL SPECIFICATION
• ENGINEERING GRADE HEAT CURED POLYMER ALLOY
• ALL METAL PARTS - GOLD PASSIVATED ZINC PLATED



Dimensions are in mm.



GRAPH 1 : STATIC AXIAL(VERTICAL) LOAD VS. DEFLECTION

