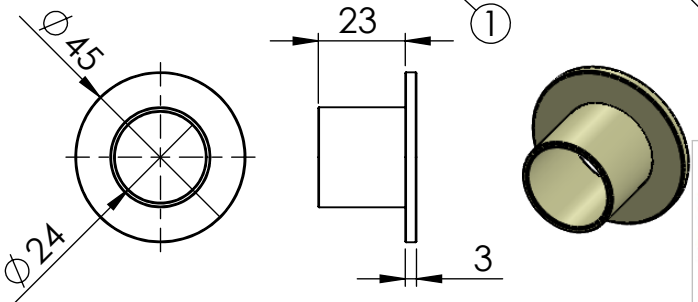
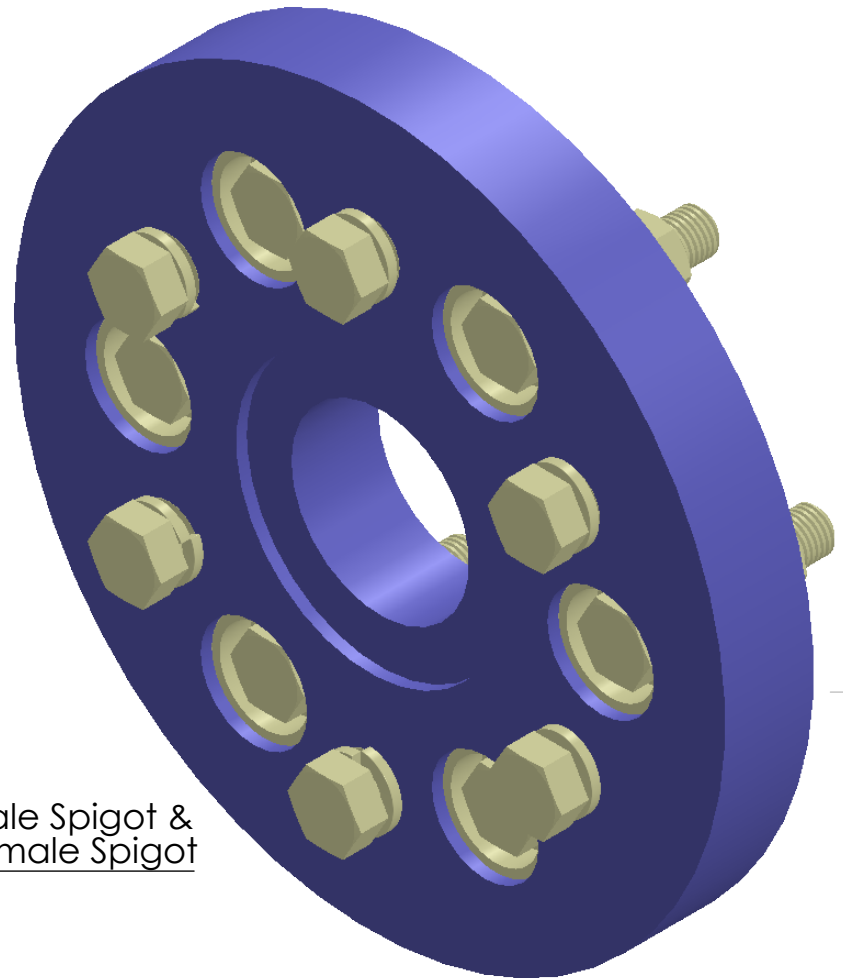
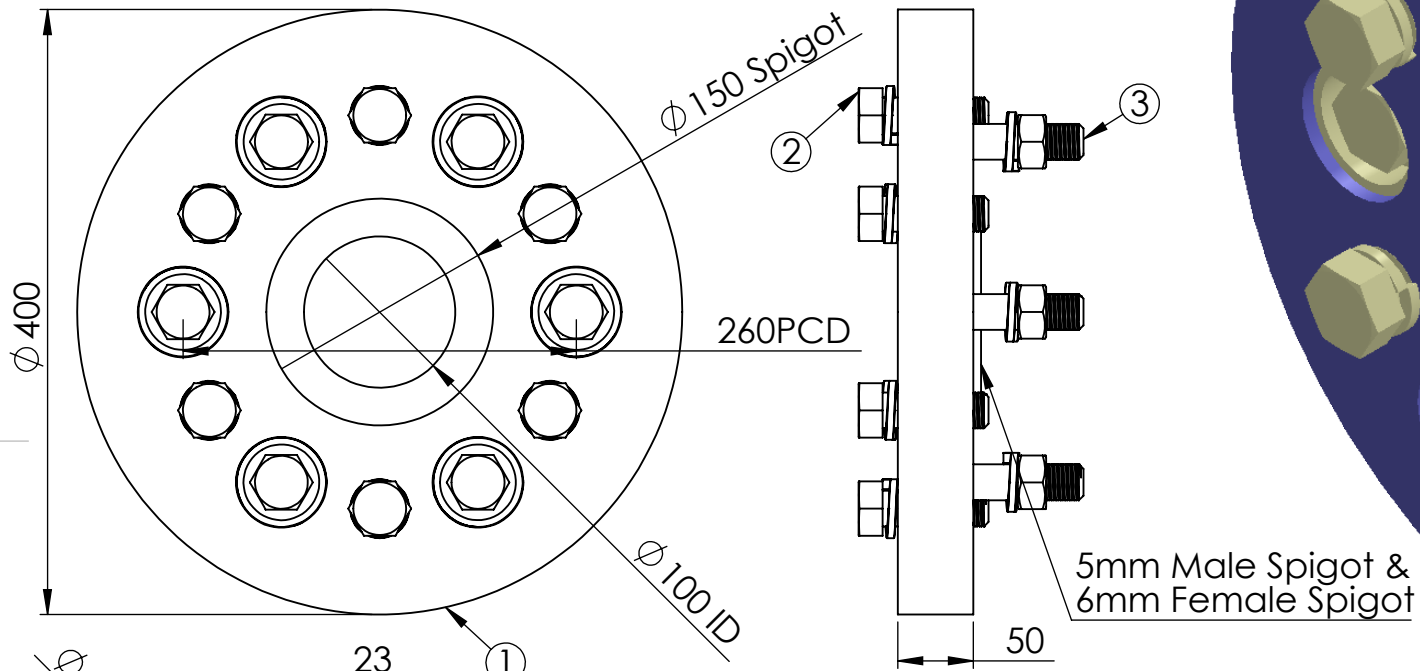


- ① Coupling Disc - ENG Grade polymer alloy (Heat Cured) - 1 off
- ② M24 X 70mm Hex Bolt & S/W - Bolt Grade 8HT - 6 off
- ③ M24 X 100mm Hex Bolt, Nut & S/W - Bolt Grade 8 HT - 6 off



T Bush supplied - 12 off

**PROPRIETARY & CONFIDENTIAL**  
 THE INFORMATION CONTAINED IN THIS DRAWING IS THE SOLE PROPERTY OF POLY FLEX GROUP PTY LTD. ANY REPRODUCTION IN PART OR AS A WHOLE WITHOUT THE WRITTEN PERMISSION OF POLY FLEX GROUP PTY LTD IS PROHIBITED.

©Poly Flex Group Pty Ltd



UNLESS OTHERWISE SPECIFIED:  
 DIMENSIONS ARE IN MILLIMETERS  
 SURFACE FINISH:  
 TOLERANCES:  
 LINEAR: +/-0.25  
 ANGULAR: +/-0.25

Part Number IN424

	NAME	SIGNATURE	DATE
DRAWN	O.Knust		19/03/2018
CHK'D	O.Knust		19/03/2018
APPV'D			
MFG			
Q.A			
Stock			

MATERIAL:  
 95A Polyurethane

WEIGHT:

DO NOT SCALE DRAWING

REVISION A

COMMENTS:  
 Break ALL edges with a 0.25mm chamfer.

TITLE:  
 Poly Flex Flexible Coupling  
 24150-4-95 M24

DWG NO.  
 24150-24M-4-95 Flexible Coupling

A4

SCALE 1:3

SHEET 1 OF 1