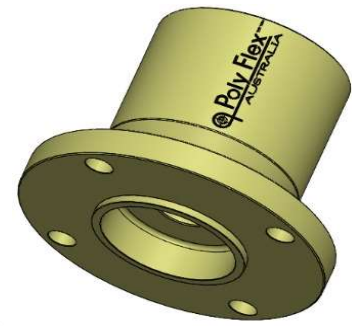


# Poly Flex Data Sheet

**Product:** Steel Half Coupling

**Series:** Solid Pilot Bored

**Model:** 524 Pilot Bored Half Coupling



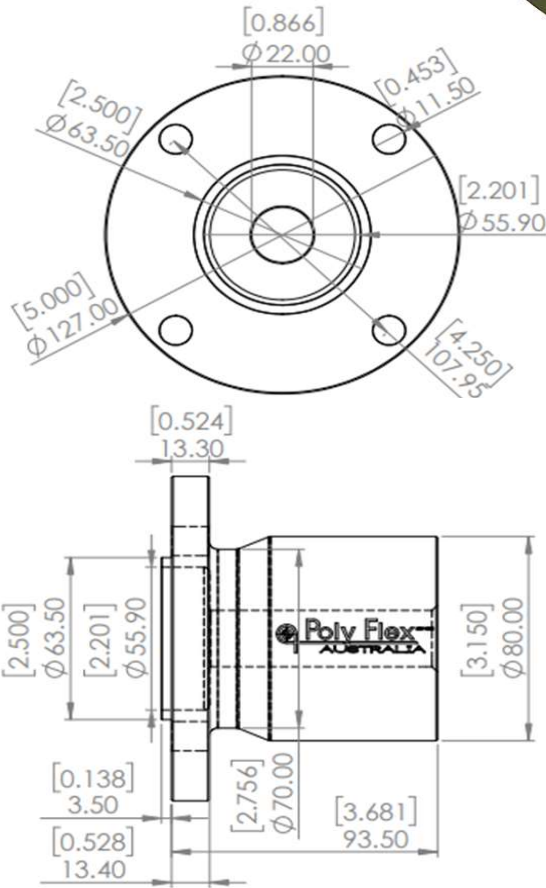
<u>Material Specification</u>	
· CNC Lathe - CS1020 Steel	
· All Metal Parts - SA5 Cobalt Zinc Plated	

<u>Weight Of Coupling</u>	
Kg	lbs
3.8	8.377

<u>Available Shaft Sizes</u>	
Metric	Inches
22mm to 50mm	7/8" to 2"

<u>Available Keyways</u>	
Metric	Inches
5mm - 3mm Deep	3/16" - 7/64" Deep
6mm - 3.5mm Deep	1/4" - 7/64" Deep
8mm - 4mm Deep	5/16" - 11/64" Deep
10mm - 4mm Deep	3/8" - 3/16" Deep
12mm - 4mm Deep	7/16" - 3/16" Deep
14mm - 5mm Deep	1/2" - 3/16" Deep
16mm - 5mm Deep	9/16" - 13/64" Deep
18mm - 5.5mm Deep	5/8" - 13/64" Deep
	3/4" - 7/32" Deep

<u>Available Grub Screws</u>	
8mm	10mm



<u>Transmission Cross Reference</u>	
<b>Borg Warner / 5" Flange</b>	<b>Volvo / 5" Flange</b>
BW 71C, BW 72C, BW 1000, VELVET DRIVE 5000A	MS, MS 3, MS 4, MS 4 A, MS 5, HS 25 A, HS 45 A
<b>Newage Prm / 5" Flange</b>	<b>Yanmar/Kansaki / 5" Flange</b>
PRM 101, PRM 140, PRM 160, PRM 260, PRM 602	KMH 40, KMH 50 A, KMH 50 V
<b>Technodrive / 5" Flange</b>	<b>Yanmar/Kansaki / 5 1/2" Flange</b>
TMC 93, TMC 93A, TMC 170, TMC 170A, TMC 260 TMC 345, TMC 345A, TMC 485A, TMC 545A, TM 880A	KM 5, KM 5 A, LH SERIES
<b>TMP</b>	<b>ZF/Hurth / 5" Flange</b>
1200	HBW 360, HBW 360A, HBW 400, HBW 450, HSW 450H2, ZF 45-1, HSW 450A2, ZF 45A, HSW 450D, ZF 45C, ZF 50A2, ZF 50A3, HSW 600, HSW 630, HSW 630H1, ZF 63, HSW 630A1 ZF 63A, HSW 630D, ZF 63C, ZF 63IV, HSW 630V, ZF 88C, ZF 90TS, ZF 90ATS, ZF 110TS, ZF 901VTS
<b>Twin Disc / 5" Flange</b>	
MG 5005 A, MG 5010 A, MG 5011 A, MG 5011 SC MG 5012 SC, MG 5015 A, MG 5020 SC, MG 5055 A	

The following data is supplied as a guide only.  
Specifications are subject to change without notice.

Date: 13/06/2023  
Copyright © 2022 Poly Flex Group Pty Ltd.  
26 - 28 Tubbs Street Clontarf, Qld. 4019. Australia  
07 3284 2799 : Int Code +61  
info@polyflex.com.au  
www.polyflex.com.au



MARINE . MINING . DEFENCE . INDUSTRIAL . COMMERCIAL . AGRICULTURAL . AUTOMOTIVE  
Australian Made Quality & Performance that is Second to None