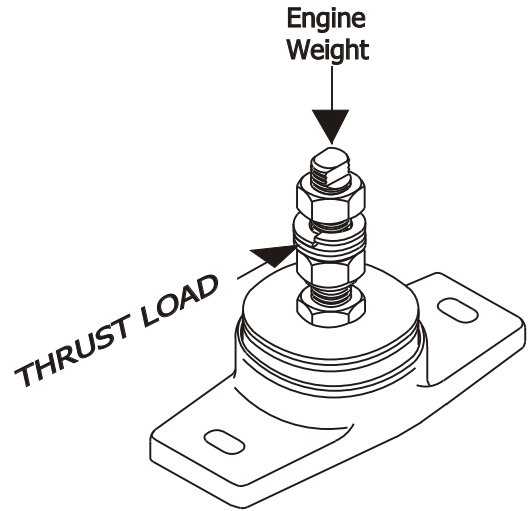
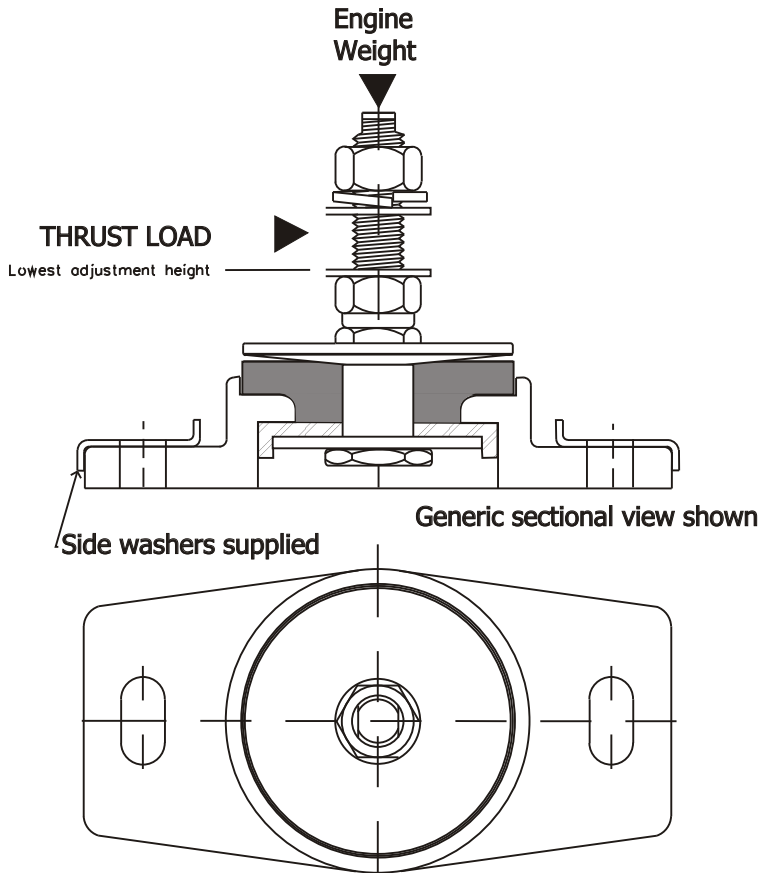
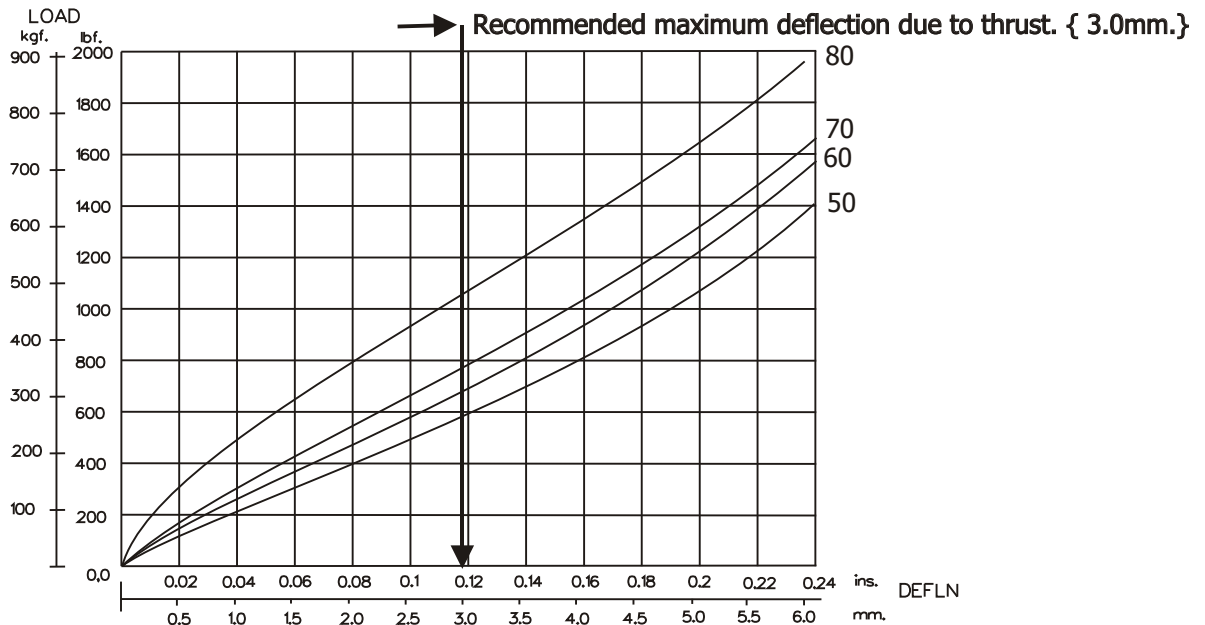


Poly Flex Engine Mounts have been specifically designed to:
provide Vibration Control combined with a high Thrust Load Resistance.



Example Thrust Resistance graph for the Poly Flex Model: P#10.5F105-12-20/24
for the range of mount hardnesses '50 to 80 Shore Durometer - A scale'.



GRAPH 2 : STATIC LONGITUDINAL THRUST LOAD (@ 90mm) VS. DEFLECTION
WITH STATIC VERTICAL LOAD OF 200kg.

© 1999 Poly Flex
Drawing No:0-5THRST
Drawn: PB: 22/3/99